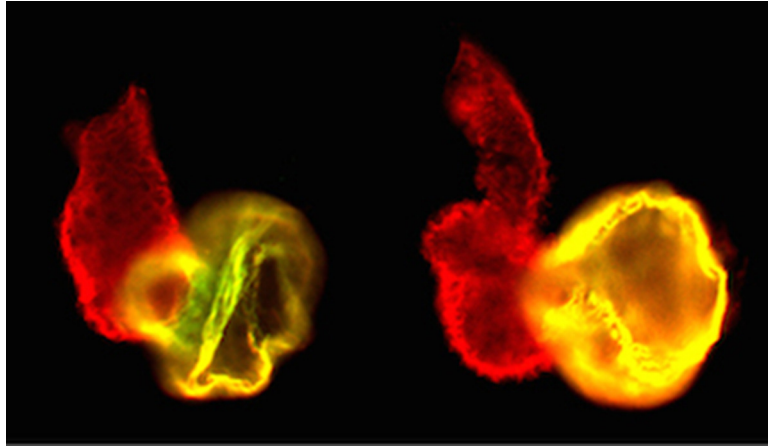




Sculpting the Heart: Dynamic Regulation of Organ Dimensions



Our research focuses on the molecular mechanisms that determine the specific size and shape of the embryonic zebrafish heart. Some of our recent studies highlight the dynamic regulation of cardiac dimensions, particularly the mechanisms by which the heart adjusts and augments itself as the organism matures. We will discuss topics related to this theme, including the growth of heart size through the recruitment of late-differentiating cells and the retention of heart shape through the maintenance of cardiac chamber identity.

Dr. Deborah Yelon

University of California, San Diego

Host: Dr. Ian Scott

Date: Thursday, April 17th

Time: 10:00 a.m.

Place: Medical Sciences Building
1 King's College Circle
Room 4171