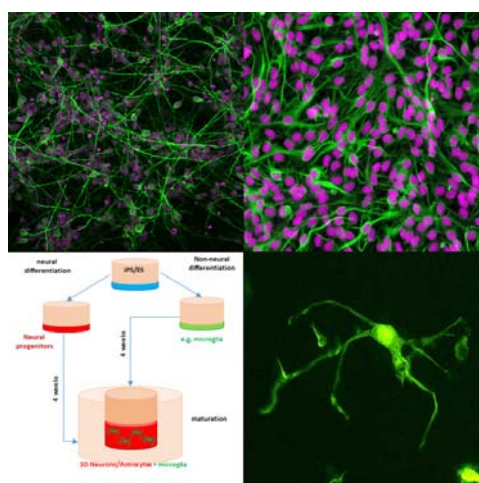




## Dish Microglia: Towards Synthetic Models of Human Neuro-Immune Interactions



The Muffat lab seeks to establish new research tools and study the interplay between the central nervous system and the immune system. We focus extensively on the resident immune cells of the brain, Microglia. Microglia establish lifelong residence inside the brain amongst neurons and macroglia, but share a very early myeloid origin with other tissue macrophages. Microglia are at the leading edge of our knowledge on the etiology of diseases such as Alzheimer's disease or Autism. We can interrogate our platforms to understand how these cells mature, shape development during critical neurogenic and gliogenic periods, and integrate central and peripheral inflammatory cues that precede, accompany, or terminate various disorders.

### Dr. Julien Muffat

Candidate for Faculty Appointment  
SickKids Research Institute

Host: Dr. Leah Cowen

**Date:** Wednesday February 28, 2018

**Time:** 1:00 PM

**Place:** Medical Sciences Building,  
Room 4171