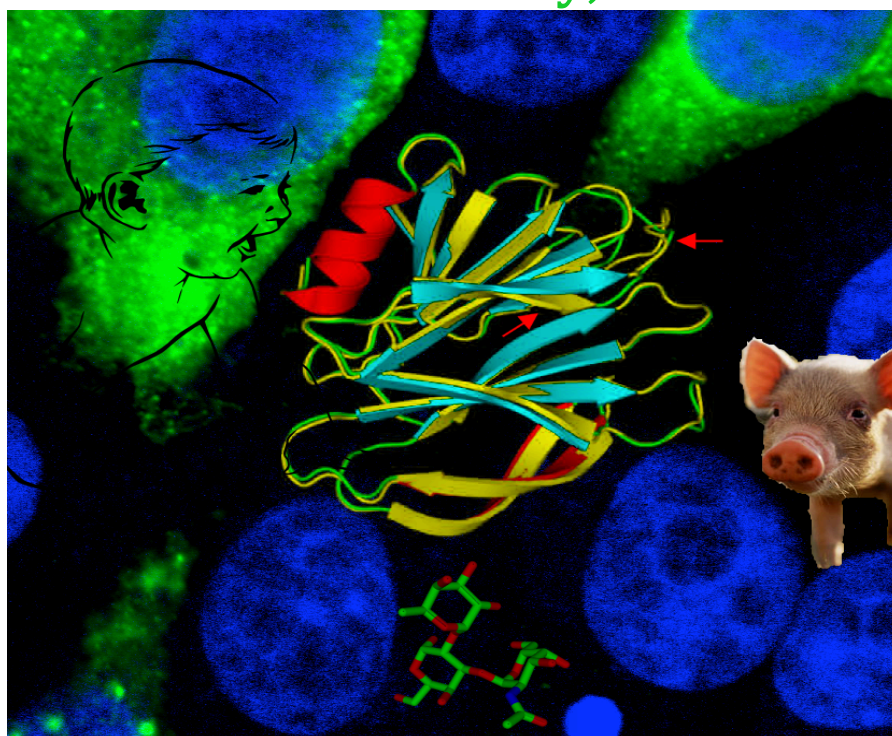


MOLECULAR STRUCTURE & FUNCTION SEMINAR SERIES

Helen Blanchard, PhD, FRSC

Research Leader, Institute for Glycomics
Director, Higher Degree Research (HDR) Griffith Sciences
Griffith University, Australia



*STRUCTURAL INSIGHTS INTO DISEASE-PROMOTING
CARBOHYDRATE-RECOGNISING PROTEINS*

HOST: DR. Jean-Philippe Julien

FRIDAY, AUGUST 5 2016

2:30-3:30 PM

PGCRL EVENT ROOM 1 (02.9320, 2ND FLOOR)

