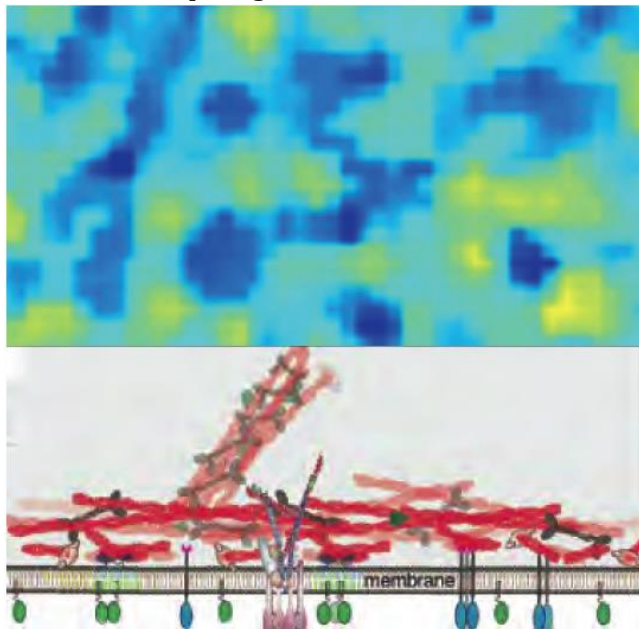


*MOLECULAR MEDICINE SPECIAL SEMINAR**

SATYAJIT MAYOR, PhD

**DIRECTOR, NATIONAL CENTRE FOR BIOLOGICAL SCIENCES
TATA INSTITUTE FOR FUNDAMENTAL RESEARCH
BANGALORE, INDIA**

Top view of the cell surface depicting the collection of nanocluster rich domains



Transverse view of the membrane-actin cortex

THE SKIN OF A LIVING CELL: AN ACTIVE ACTIN- MEMBRANE COMPOSITE INFLUENCING MEMBRANE RECEPTOR FUNCTION

HOST: DR. JONATHON DITLEV

MONDAY, NOVEMBER 16, 2020

10:00 AM-11:00 AM*

JOIN THROUGH ZOOM

